

1. 环境洛伦兹曲线



2. 环境基尼系数



3. 绿色贡献率



PART 01



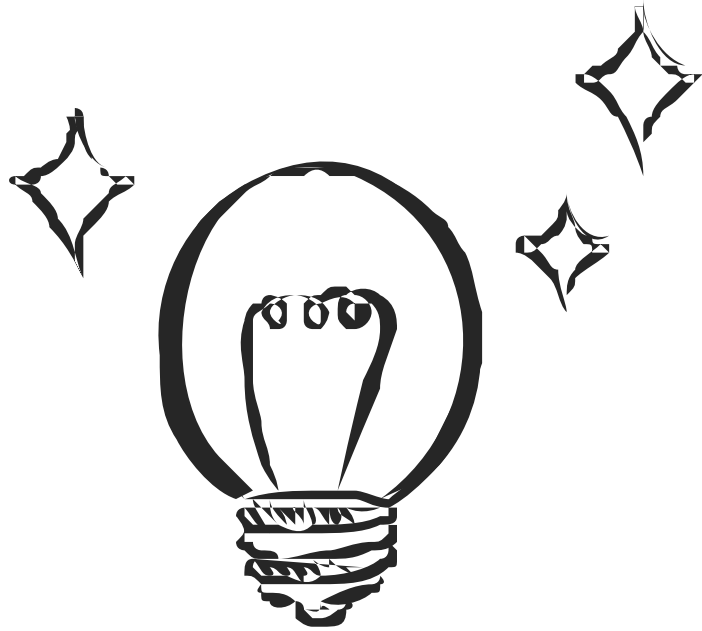
1

环境洛伦兹曲线





方法



图形绘制流程

1. 计算各省污染物、GDP占全国百分比
2. 按GDP/污染物对数据进行排序
3. 以GDP百分比累积量为纵坐标，污染物排放量百分比累积量为横坐标绘制



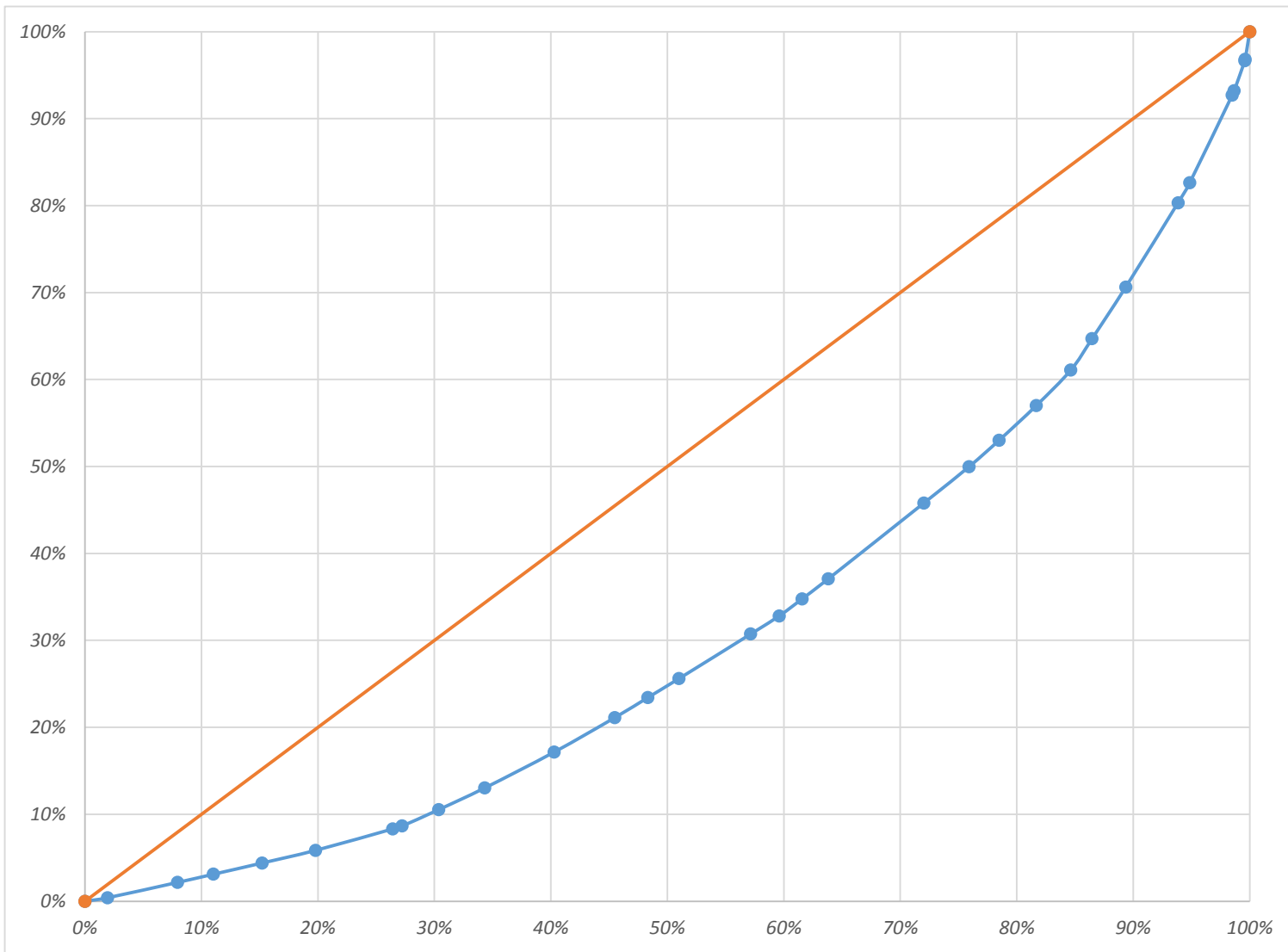
地区	GDP百分比	SO2百分比
北京	3.18%	0.38%
天津	2.29%	1.00%
河北	4.12%	5.96%
山西	1.77%	6.03%
内蒙古	2.47%	6.62%
辽宁	3.97%	5.21%
吉林	1.95%	1.95%
黑龙江	2.09%	2.45%
上海	3.48%	0.92%
江苏	9.70%	4.49%
浙江	5.93%	2.89%
安徽	3.04%	2.58%
福建	3.59%	1.82%
江西	2.31%	2.84%
山东	8.72%	8.21%
河南	5.12%	6.16%
湖北	4.09%	2.97%
湖南	4.00%	3.20%
广东	10.07%	3.65%
广西	2.32%	2.27%
海南	0.51%	0.17%
重庆	2.17%	2.67%
四川	4.16%	3.86%
贵州	1.45%	4.59%
云南	1.88%	3.14%
西藏	0.14%	0.03%
陕西	2.49%	3.95%
甘肃	0.94%	3.07%
青海	0.33%	0.81%
宁夏	0.40%	1.92%
新疆	1.29%	4.19%

GDP百分比	SO2百分比	比率 (GDP/污染物总量)
0.40%	1.92%	20.94%
1.77%	6.03%	29.30%
0.94%	3.07%	30.61%
1.29%	4.19%	30.82%
1.45%	4.59%	31.67%
2.47%	6.62%	37.26%
0.33%	0.81%	41.23%
1.88%	3.14%	60.02%
2.49%	3.95%	63.07%
4.12%	5.96%	69.17%
3.97%	5.21%	76.12%
2.31%	2.84%	81.46%
2.17%	2.67%	81.54%
5.12%	6.16%	83.18%
2.09%	2.45%	85.03%
1.95%	1.95%	99.68%
2.32%	2.27%	102.62%
8.72%	8.21%	106.22%
4.16%	3.86%	107.73%
3.04%	2.58%	117.90%
4.00%	3.20%	124.84%
4.09%	2.97%	137.85%
3.59%	1.82%	197.77%
5.93%	2.89%	205.12%
9.70%	4.49%	215.97%
2.29%	1.00%	228.83%
10.07%	3.65%	276.12%
0.51%	0.17%	294.87%
3.48%	0.92%	378.36%
0.14%	0.03%	488.91%
3.18%	0.38%	831.45%



GDP比率

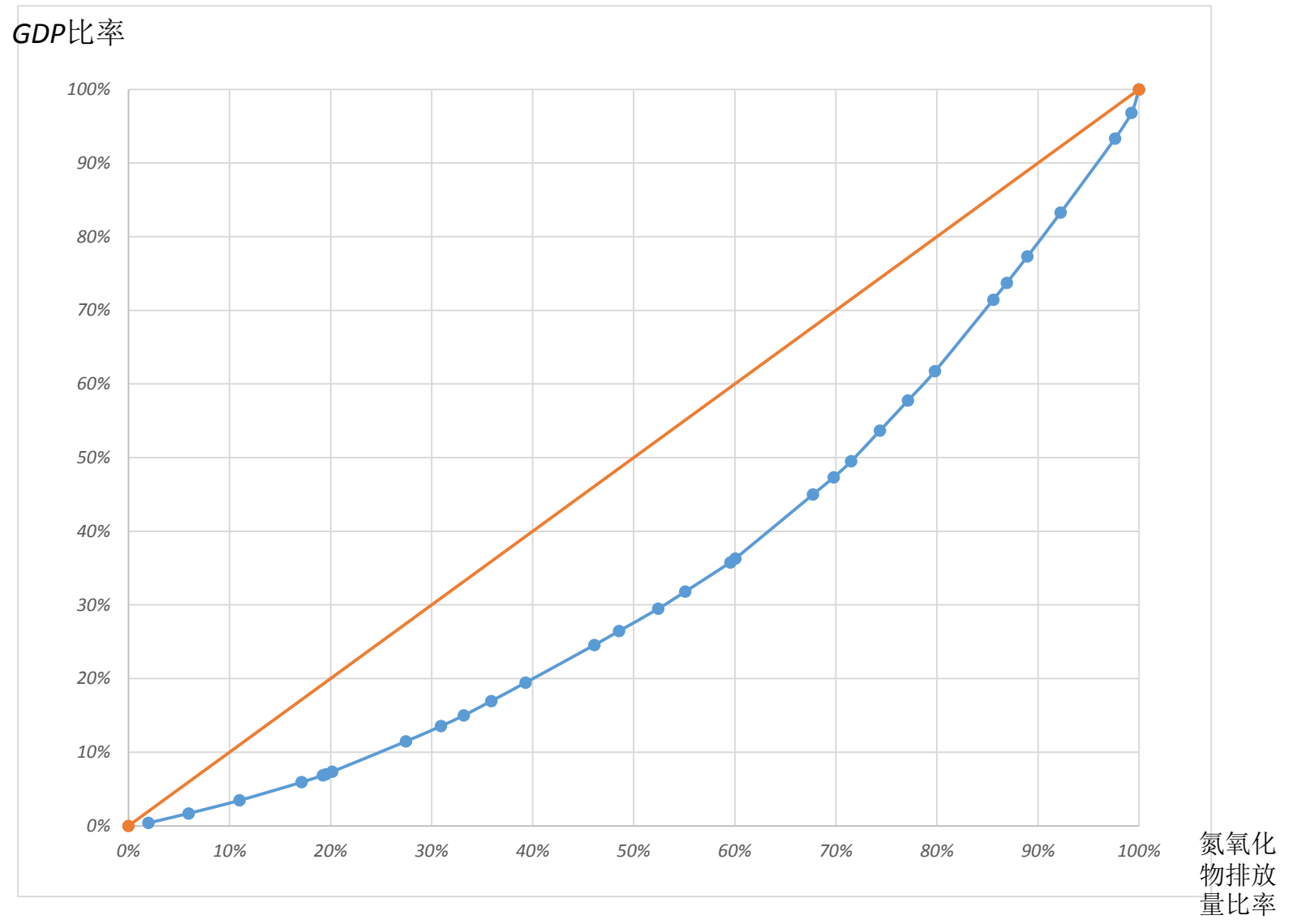
SO₂环境洛伦兹曲线



SO₂排放量比率



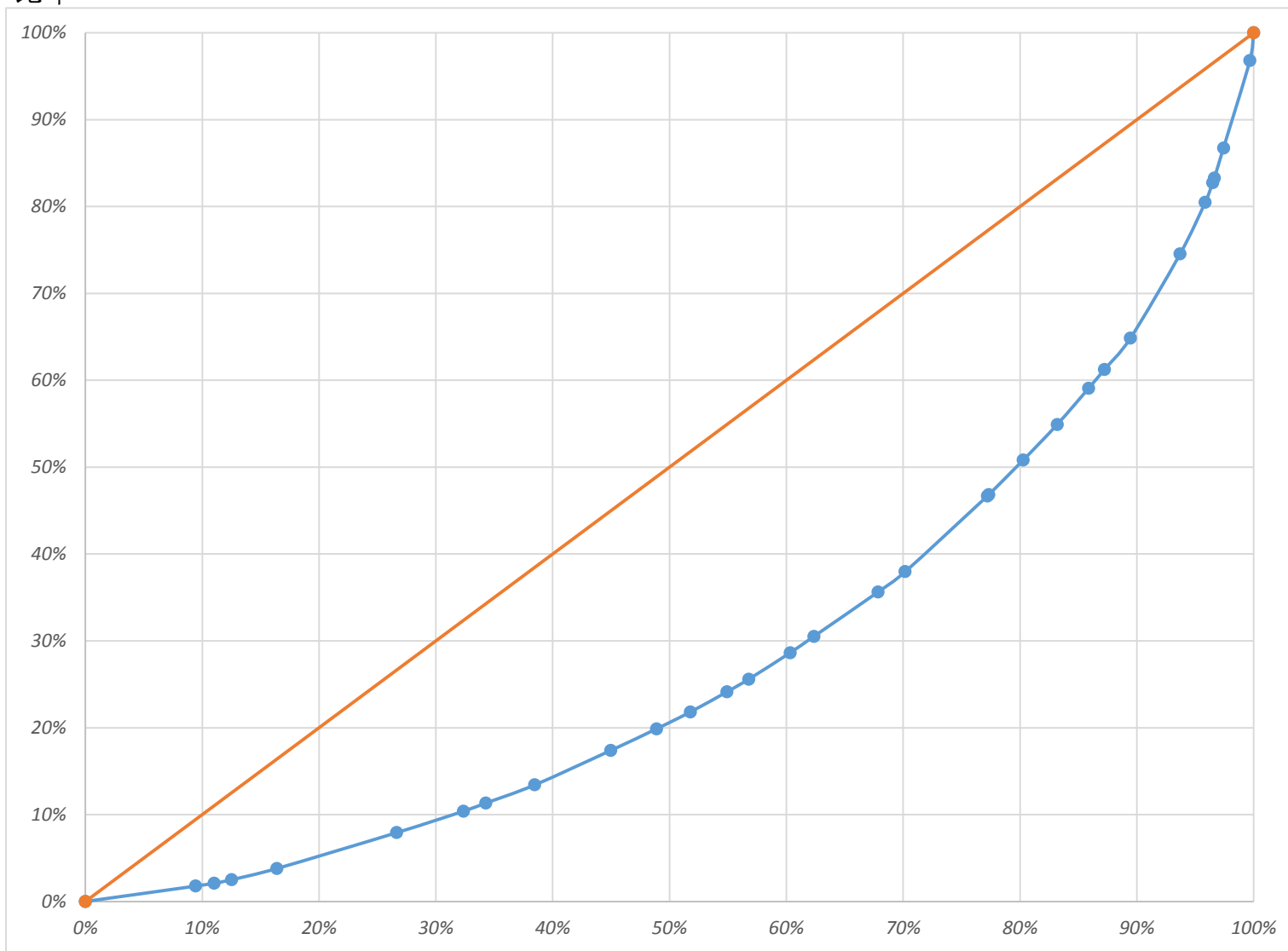
氮氧化物环境洛伦兹曲线





烟粉尘环境洛伦兹曲线

GDP比率



烟粉尘
排放量
比率

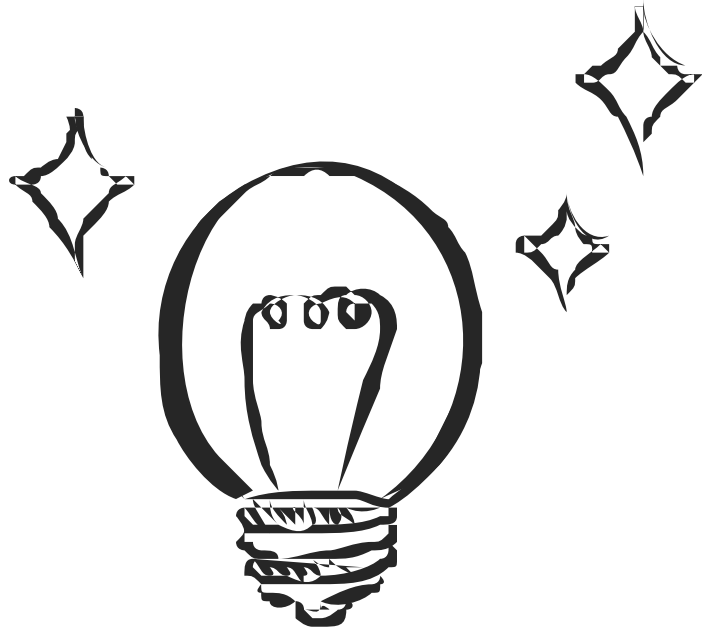


② 基尼系数

A dashed arrow pointing from the number 2 to the right, ending in a paper airplane shape.

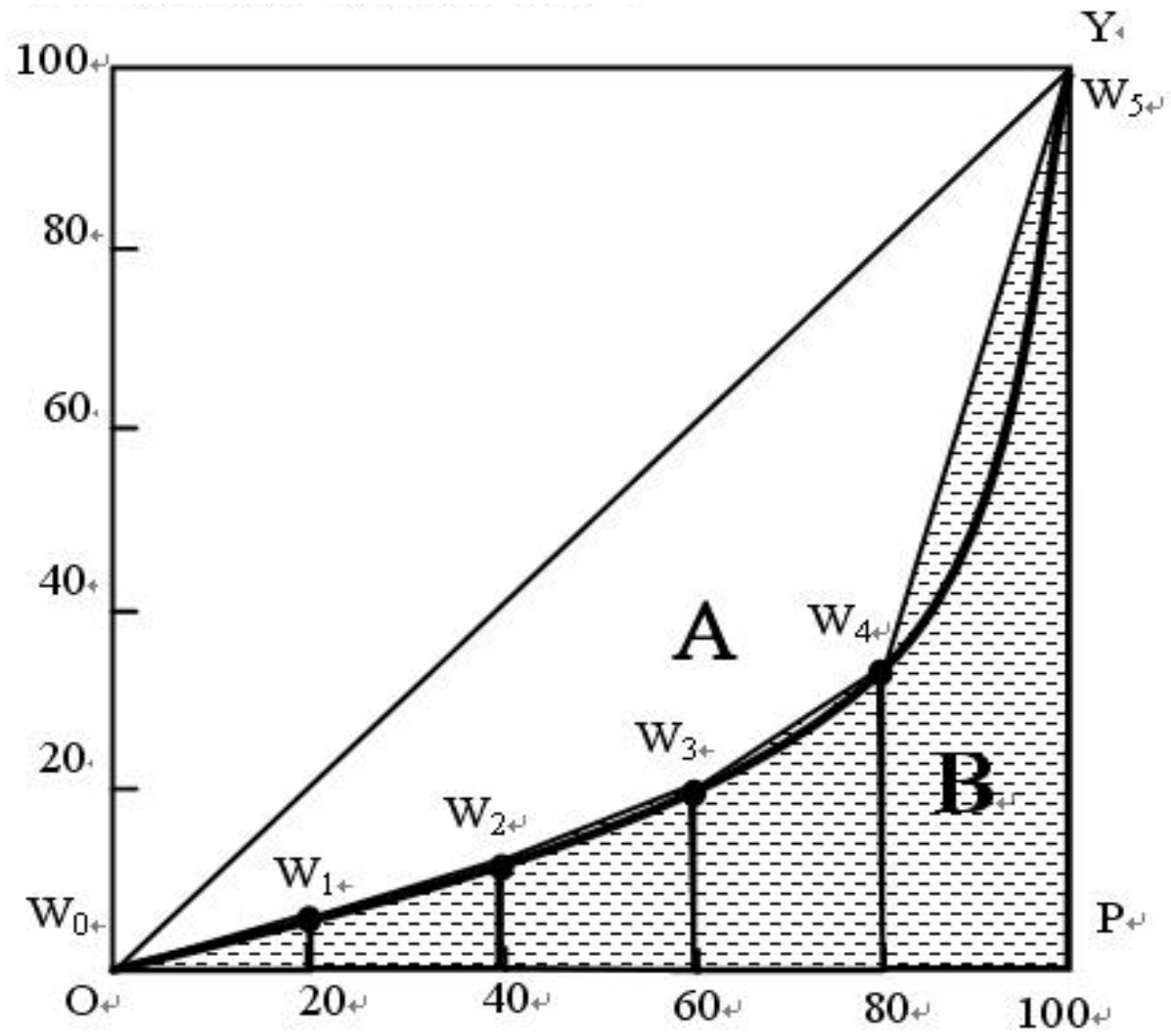


方法



系数计算过程

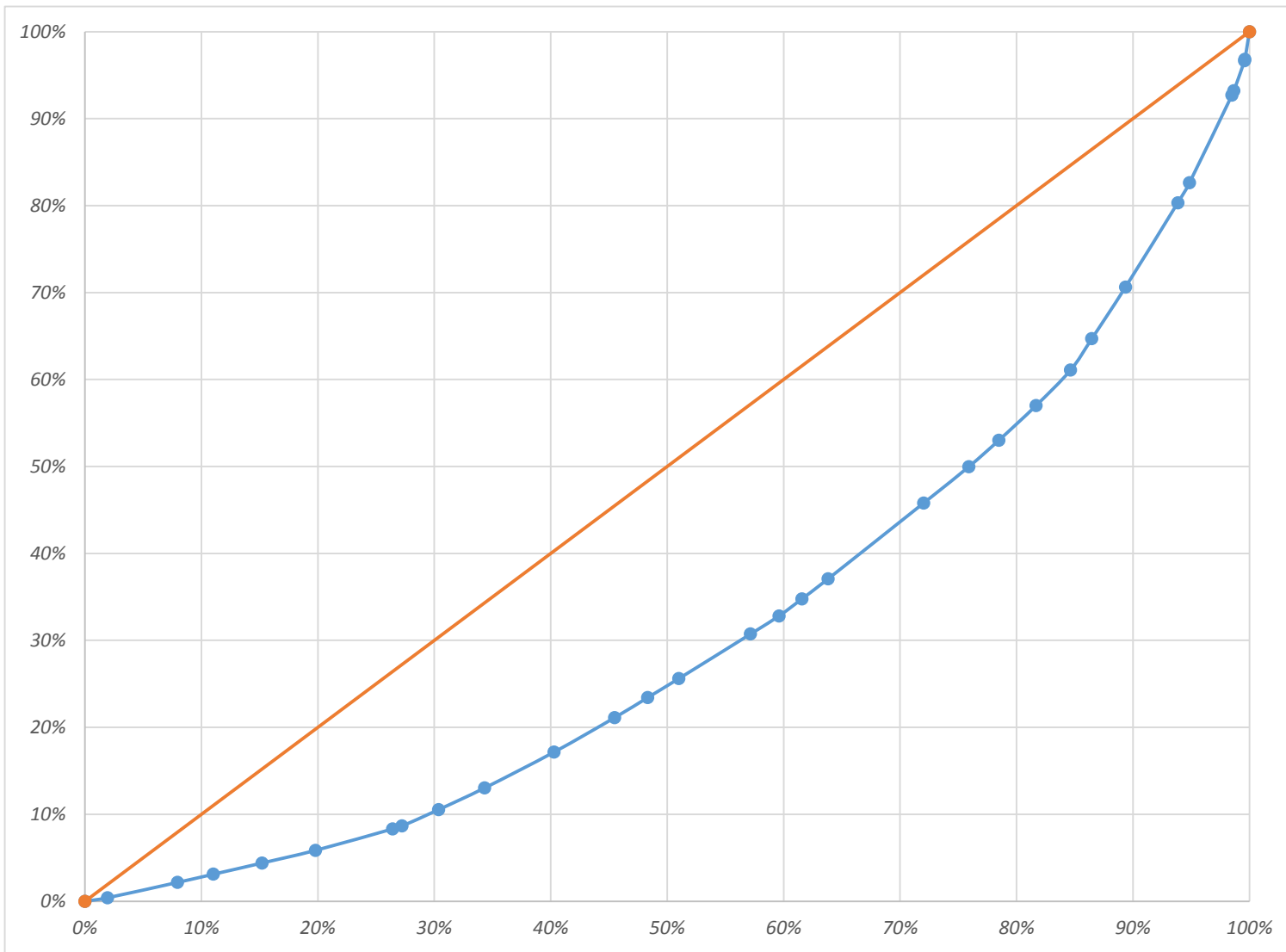
- 1.以梯形面积替代曲线下方面积
- 2.计算面积比得到最终结果





GDP比率

SO₂环境洛伦兹曲线

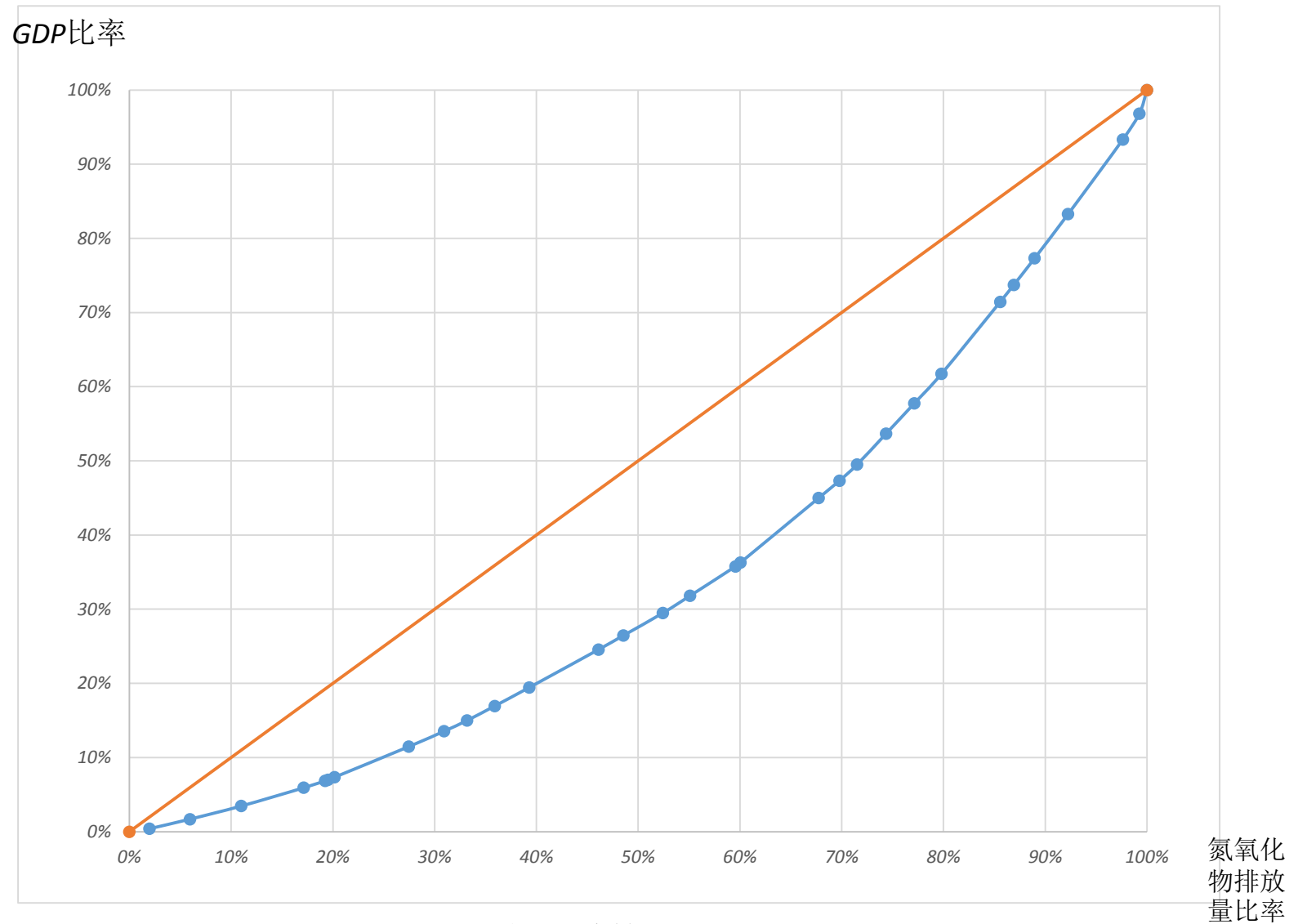


SO₂排放量比率

基尼系数: 0.379



氮氧化物环境洛伦兹曲线

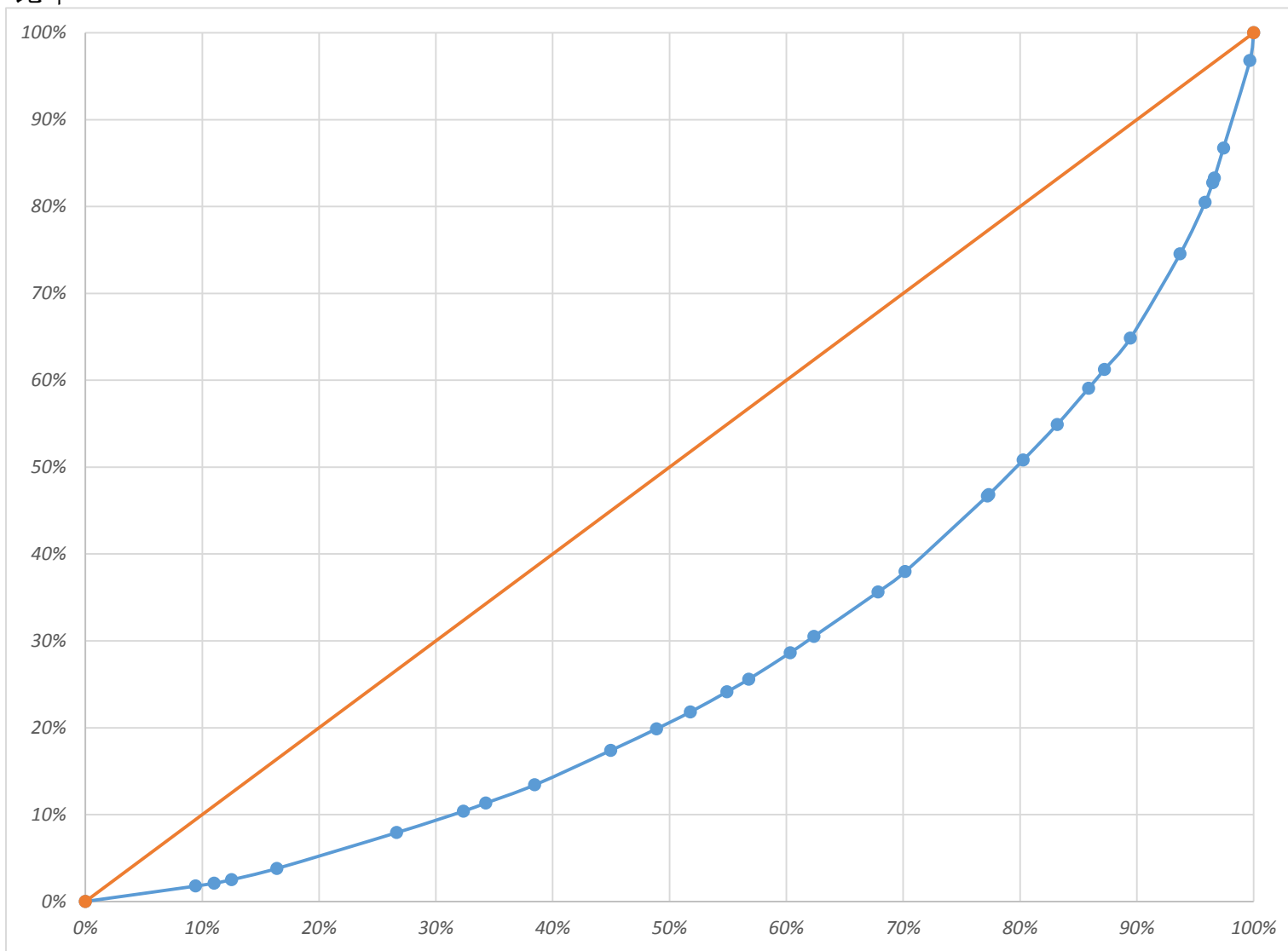


基尼系数: 0.312



烟粉尘环境洛伦兹曲线

GDP比率



烟粉尘
排放量
比率

基尼系数: 0.441

PART 03



3

绿色贡献率





地区	GDP百分比	SO2百分比	氮氧化物百分比	烟粉尘百分比	SO2贡献率	氮氧化物贡献率	烟粉尘贡献率
北京	3.18%	0.38%	0.74%	0.32%	8.3	4.3	9.9
天津	2.29%	1.00%	1.33%	0.65%	2.3	1.7	3.5
河北	4.12%	5.96%	7.30%	10.24%	0.7	0.6	0.4
山西	1.77%	6.03%	5.03%	9.42%	0.3	0.4	0.2
内蒙古	2.47%	6.62%	6.15%	5.71%	0.4	0.4	0.4
辽宁	3.97%	5.21%	4.47%	6.50%	0.8	0.9	0.6
吉林	1.95%	1.95%	2.71%	2.91%	1.0	0.7	0.7
黑龙江	2.09%	2.45%	3.48%	4.19%	0.9	0.6	0.5
上海	3.48%	0.92%	1.62%	0.78%	3.8	2.1	4.4
江苏	9.70%	4.49%	5.77%	4.26%	2.2	1.7	2.3
浙江	5.93%	2.89%	3.28%	2.15%	2.1	1.8	2.8
安徽	3.04%	2.58%	3.89%	3.55%	1.2	0.8	0.9
福建	3.59%	1.82%	2.05%	2.22%	2.0	1.8	1.6
江西	2.31%	2.84%	2.66%	3.12%	0.8	0.9	0.7
山东	8.72%	8.21%	7.69%	7.04%	1.1	1.1	1.2
河南	5.12%	6.16%	6.82%	5.50%	0.8	0.8	0.9
湖北	4.09%	2.97%	2.78%	2.91%	1.4	1.5	1.4
湖南	4.00%	3.20%	2.68%	2.96%	1.2	1.5	1.4
广东	10.07%	3.65%	5.38%	2.26%	2.8	1.9	4.5
广西	2.32%	2.27%	2.04%	2.31%	1.0	1.1	1.0
海南	0.51%	0.17%	0.48%	0.13%	2.9	1.1	3.9
重庆	2.17%	2.67%	1.73%	1.36%	0.8	1.3	1.6
四川	4.16%	3.86%	2.84%	2.68%	1.1	1.5	1.5
贵州	1.45%	4.59%	2.26%	1.86%	0.3	0.6	0.8
云南	1.88%	3.14%	2.43%	2.03%	0.6	0.8	0.9
西藏	0.14%	0.03%	0.28%	0.11%	4.9	0.5	1.3
陕西	2.49%	3.95%	3.39%	3.92%	0.6	0.7	0.6
甘肃	0.94%	3.07%	2.09%	1.92%	0.3	0.4	0.5
青海	0.33%	0.81%	0.64%	1.60%	0.4	0.5	0.2
宁夏	0.40%	1.92%	1.99%	1.49%	0.2	0.2	0.3
新疆	1.29%	4.19%	3.98%	3.87%	0.3	0.3	0.3

S02贡献率



比例尺

比例尺

图地图慧
dituhui.com

图地图慧
dituhui.com

图地图慧
dituhui.com

图地图慧
dituhui.com

图地图慧
dituhui.com

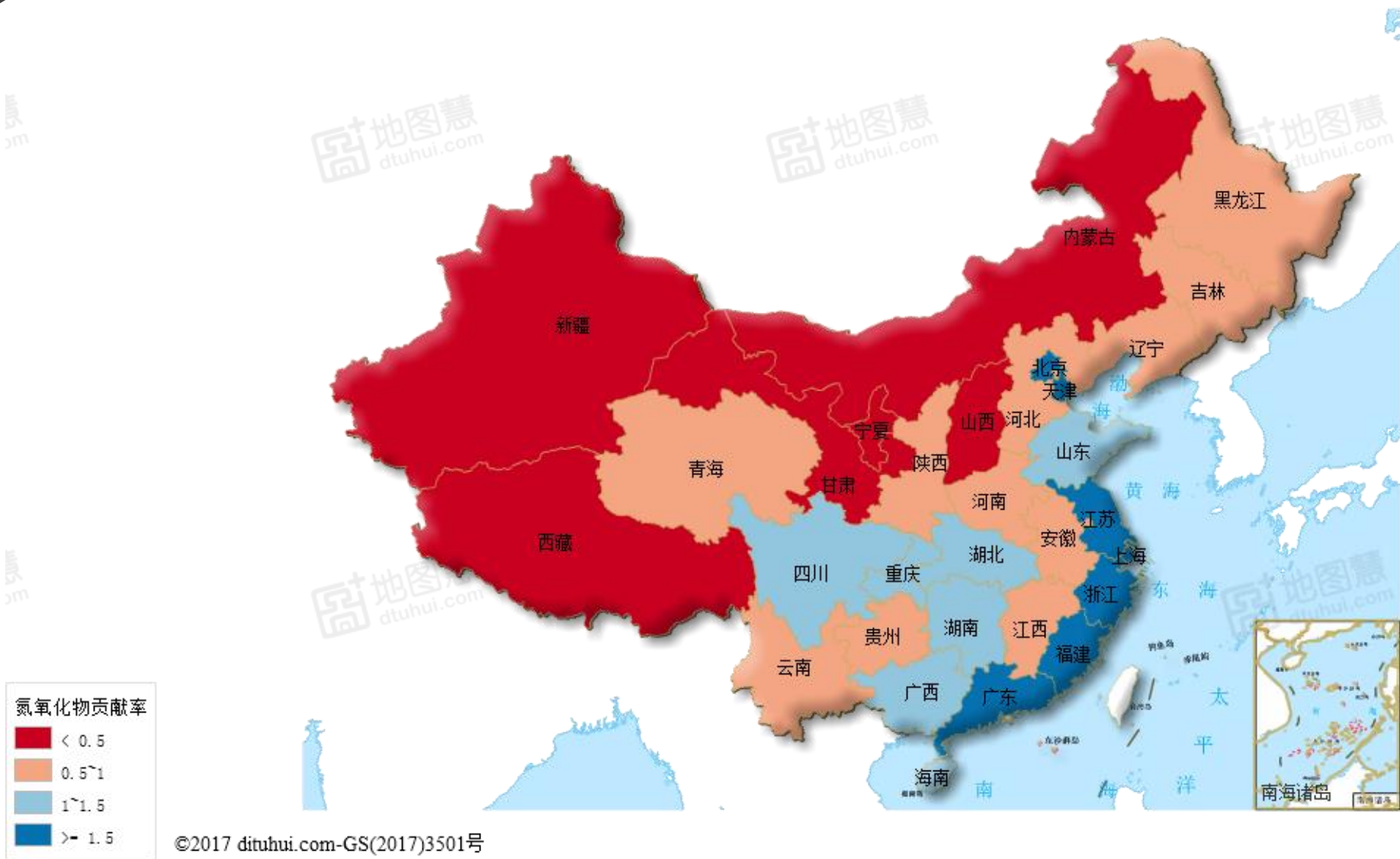


©2017 dituhui.com-GS(2017)3501号





氮氧化物贡献率





烟粉尘贡献率

dituhui.com

地图慧 dituhui.com

地图慧 dituhui.com

地图慧 dituhui.com

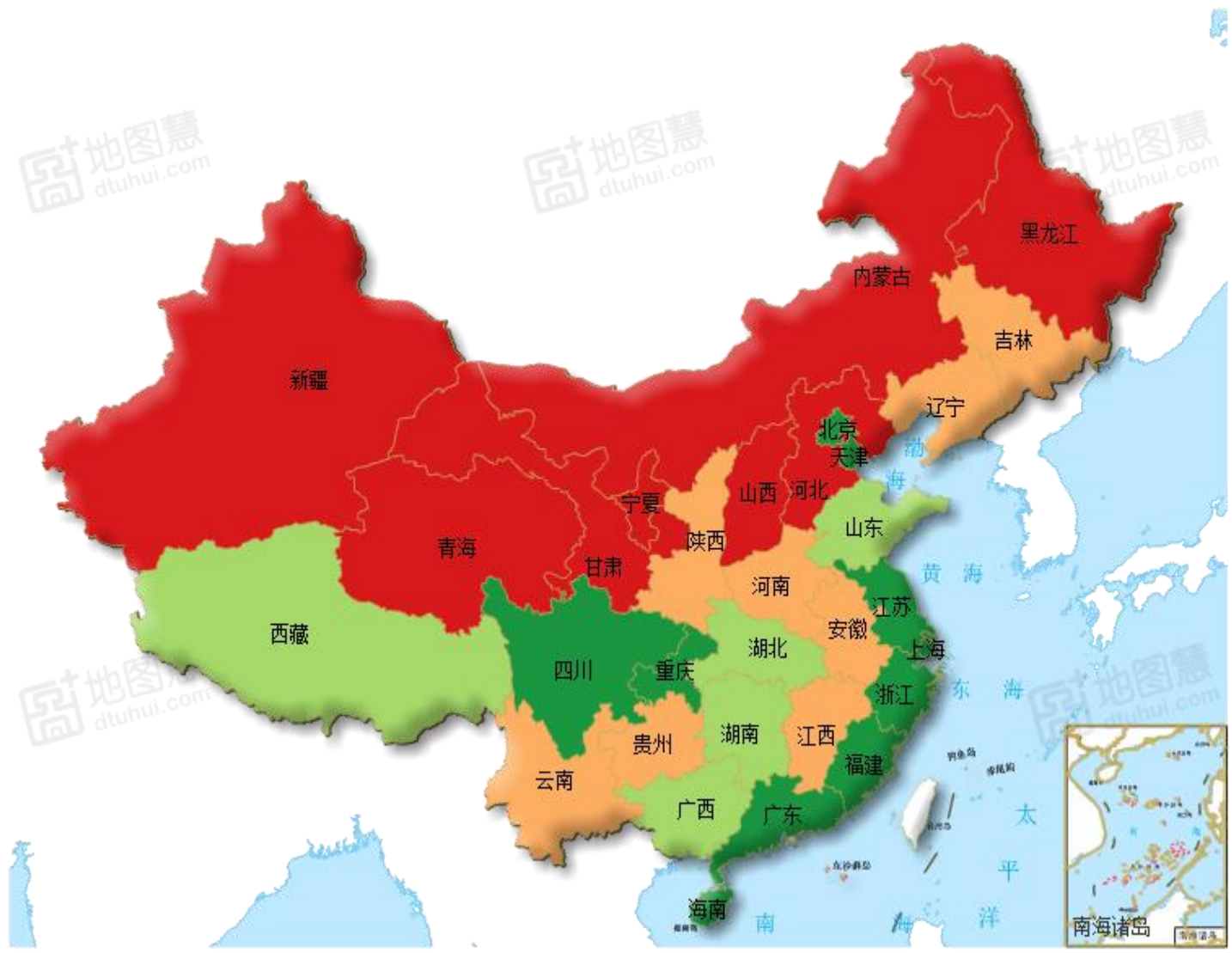
图

dituhui.com

地图慧 dituhui.com

地图慧 dituhui.com

图





谢谢观看